

# CATALOG OF PRODUCTS

If you desire further details regarding our products, please reach out to us.



## COMMUNICATION:

Telephone:

+90 262 653 01 01

+90 531 962 74 59

Address:

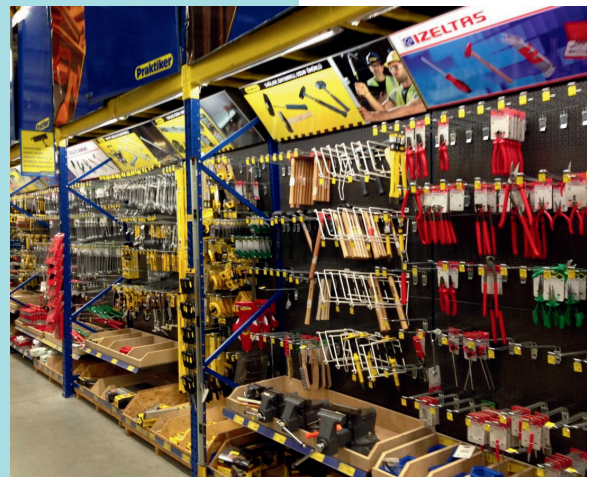
Şekerpinar Mah. No:47

Çayırova/Kocaeli TURKEY

Mail:

[info@ertasraf.com](mailto:info@ertasraf.com)

[mucahit@ertasraf.com](mailto:mucahit@ertasraf.com)



# PRODUCT CATALOG

IF YOU DESIRE FURTHER INFORMATION REGARDING OUR PRODUCTS, PLEASE GET IN TOUCH WITH US.

## Back To Back Rack Systems



It is the most common, cost-effective, and widely utilized traditional storage system. Back-to-back racking systems are formed by positioning two modules back-to-back with double-sided intermediate connections between them. Each pallet can be easily deposited and transported independently. This system enables operation with a forklift. Back-to-Back Racking Systems, with adjustable leg height and crossbar length based on customer needs, are versatile, serving from small warehouses to large, intricate logistics centers. Another key aspect of Back-to-Back Racking Systems is their compatibility with other racking systems, facilitating diverse storage purposes. This system offers numerous add-ons and accessories. Businesses ensure direct product storage or use protectors like pallets, boxes, and canisters with these accessories. The crossbars securely attach to the shelf legs through a clawed structure, allowing for easy detachment and attachment. They are simple to assemble and install swiftly.

## Mezzanine Racking Systems

Storage rack systems, essential in various sectors, offer a wide range of options to meet diverse needs. These systems, enhanced with advanced technology, feature unique equipment for efficient storage operations. Mezzanine rack models stand out as a key option, utilizing shelf legs to create platform systems in customizable configurations. By integrating high-level storage with platforms, additional usable space is generated, facilitating easy access to desired storage areas. Professional assistance from experienced companies is crucial for optimal utilization of mezzanine systems, where storage capacity depends on the number of levels. Maintaining building height is critical in this regard. Contact us anytime for expert guidance tailored to your requirements, ensuring cost-effective solutions without compromising quality.



## Drive-In Racking Systems



In this system, which enables the stacking of palletized products at greater depths, the forklift enters the system, hence referred to as DRIVE-IN, a walk-in racking system. It allows for the placement and unloading of loads in block form. Rails are utilized instead of cross beams for loading in this system. Loading in the drive-in racking system can be single-sided or double-sided, depending on warehouse conditions and product attributes. It can function as FIFO - LIFO. Particularly suitable for enterprises with consistent product turnover.

# PRODUCT CATALOG

IF YOU DESIRE FURTHER INFORMATION REGARDING OUR PRODUCTS, PLEASE GET IN TOUCH WITH US.

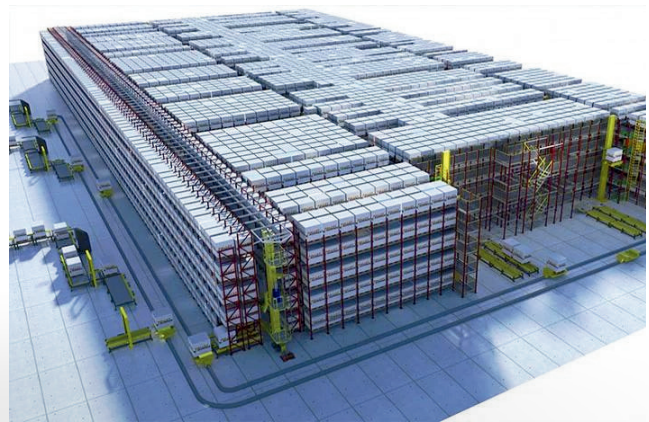
## Cantilever Arm Rack Systems



Cantilever racks are primarily utilized for the storage of elongated items such as profiles, pipes, and plastics. This system is adaptable to varying lengths through the incorporation of supplementary components. It is designed optimally for the contiguous and parallel storage of items of diverse lengths. The uprights within the cantilever rack system can function as either single-sided or double-sided. The configuration of desired aisles can be achieved through both methods. Typically, cantilever racks are paired with front fork or 4-way rotating forklifts. When handling lengthy materials, the utilization of 4-way rotating forklifts is essential to reduce aisle widths. Presently, businesses across various sectors employ cantilever rack systems for moderate to heavy loads.

## Automated Storage System

Automatic warehouse systems are commonly favored in scenarios with high storage density and limited space, handling substantial quantities of heavy loads. They find extensive use in manufacturing facilities and distribution hubs, typically operating fully autonomously and without human intervention. This operational mode ensures a remarkable level of precision in warehouse management. The advantages of Automatic Warehouse Systems (AS/RS) can be succinctly outlined as follows. Depending on the system's scale, one or more PCs or tablets, handheld terminals, and a central server are essential for system coordination. Wireless communication and data transmission are standard in the system, although data cables can be utilized if preferred. At the core of this intelligent storage system are tall warehouse shelves, towering up to 30-40 meters in height.



## Shuttle Rack Systems



The Shuttle Racking System is a high-density storage solution enabling the loading and unloading of products along shelves using an automated carrier, eliminating the requirement for forklifts to maneuver through warehouse aisles. Operators utilize a remote control to operate the shuttle, facilitating functions such as forward and backward movements, vertical adjustments, as well as loading and unloading operations. Rapid loading and unloading of shelves are achievable, with the shuttle being transferable to various shelf cells via a forklift. Capable of handling pallets of varying dimensions, the shuttle can transport a 1500kg load at a speed of 1m/sec. Equipped with its control unit and electrical system, the system ensures efficient and seamless operations.

# PRODUCT CATALOG

IF YOU DESIRE FURTHER INFORMATION REGARDING OUR PRODUCTS, PLEASE GET IN TOUCH WITH US.

## Sliding Rack Systems



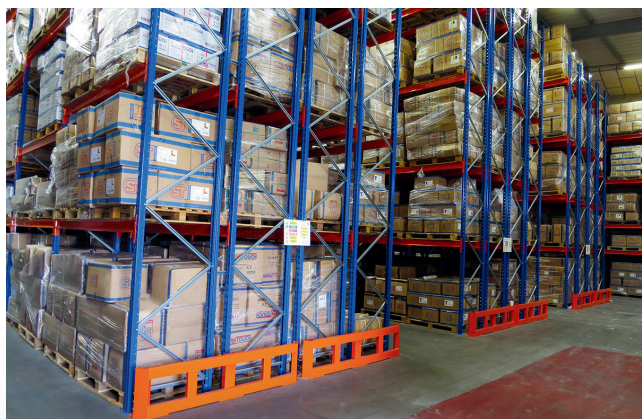
Sliding shelf systems are commonly utilized in dynamic shelving units. They represent a type of storage shelving system that facilitates the controlled movement of palletized goods of uniform size and content. These goods are loaded into channels containing roller roll cassettes set at a 4% incline, allowing them to move towards the exit side through the force of gravity from the input direction. The sliding shelf system functions as a storage solution where palletized goods are loaded from one end and unloaded from the other, operating based on the principles of physical gravity without the need for additional energy. Comprising channels equipped with roller systems, this system enables pallets to slide directly towards the unloading point due to the incline. Sliding shelf warehouses are commonly employed for order preparation in storage facilities. This system facilitates the efficient management of products with short shelf lives and perishable items. The adaptability of shelf rollers to various material compositions enhances their versatility.

## Curtain Wall Racking Systems

The clad rack system eliminates the necessity for a roof and exterior facade typically required for warehouses, enabling the establishment of a building-free rack system. This system eliminates the need for upfront building construction. Moreover, it offers a cost advantage ranging from 18% to 30% by avoiding construction investments. By eliminating columns and beams required in traditional buildings, it prevents space wastage. Adjustable shelf heights optimize space utilization, minimizing losses. Clad rack system warehouses can be delivered as turnkey solutions. Their demountable nature allows for easy relocation and reassembly, ideal for address changes. In building-free rack systems, corridor distances can be customized based on equipment requirements. External cladding involves applying concrete to the ground, fixing shelves onto it, and creating the warehouse by covering it with facade cladding (sandwich panel). Optionally, ramps and bellows can be incorporated.



## Double Deep Racking Systems



Double-Depth Racking Systems represent a storage solution that bridges the gap between adjustable pallet racking systems and compact storage systems. In this configuration, pallets are stored two deep, maximizing storage density while maintaining straightforward and efficient pallet access. Unlike adjustable pallet racking, direct access to the entire pallet is not available in double-deep pallet racking. Specialized forklifts with telescopic forks or a pantograph mechanism are utilized to access the second pallet. These systems are highly efficient and sturdy, offering easy assembly and load level adjustments. They serve as versatile storage solutions suitable for goods of varying weights and volumes.

# PRODUCT CATALOG

IF YOU DESIRE FURTHER INFORMATION REGARDING OUR PRODUCTS, PLEASE GET IN TOUCH WITH US.

## Light Duty Shelving Systems



Shelving systems utilized for storing medium and small-scale items offer efficient storage solutions when integrated with other systems. Customizable based on product types and stocking methods, these systems are completely demountable, with adjustable floor distances. Known for their elegance, they are commonly used in showrooms. Light and medium-duty shelving systems are designed for storing lightweight, space-efficient products, with adjustable shelf intervals for versatility. Crafted from sturdy steel, these systems are durable and widely favored in various sectors like automotive, supermarkets, electronics, spare parts, and construction. Ideal for low to medium volume products, they are perfect for archive boxes and spare parts storage, ensuring items remain undamaged due to the robust shelf construction.

## Archive Shelving Solutions

Archive Shelving Systems are widely utilized for storing items like books, folders, and boxes with light weights. They offer ease of use and cost-effectiveness. These shelves can be customized in terms of depth and width based on product dimensions and usage requirements. The straightforward assembly and functional design facilitate easy expansion with extra shelves and profiles. Moreover, adjusting the number of shelves and shelf spacing is simple. The system's versatility in size design maximizes efficiency in the allocated space.



## Compact Rack Solutions



Compact Archive Systems comprise series cabinets that glide on specially designed flat rails, moving independently and converging as needed. The steering mechanism on the panel facilitates cabinet movement, enabling maximum utilization of archive rooms. Even in limited archive spaces, compact archive cabinets offer ample storage capacity. Contrasted with traditional archive cabinets or shelves, they deliver significant space efficiency in archive facilities. Moreover, they address the common issue of clutter in archive rooms, promoting tidier and more systematic storage. With an ergonomic design, they ensure quick and easy access to files.

# PRODUCT CATALOG

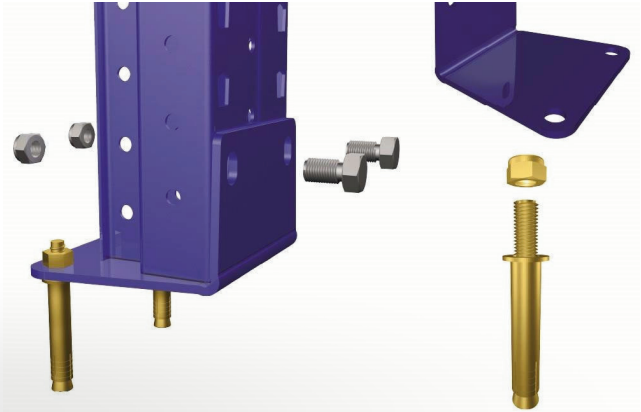
IF YOU DESIRE FURTHER INFORMATION REGARDING OUR PRODUCTS, PLEASE GET IN TOUCH WITH US.

## Accessories for Shelving Systems

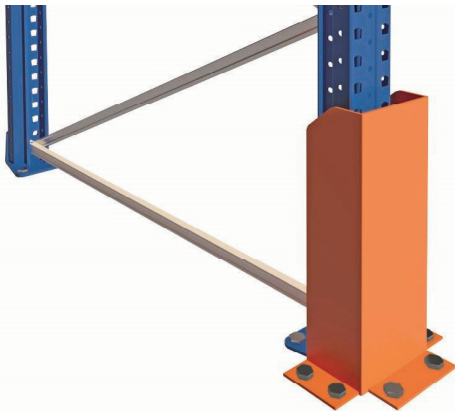
Upright Footplate



Floor Frame Steel Dowel



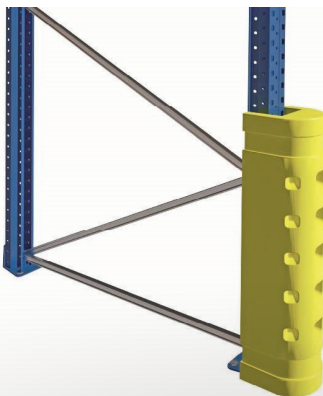
Frame Foot Protection (U)



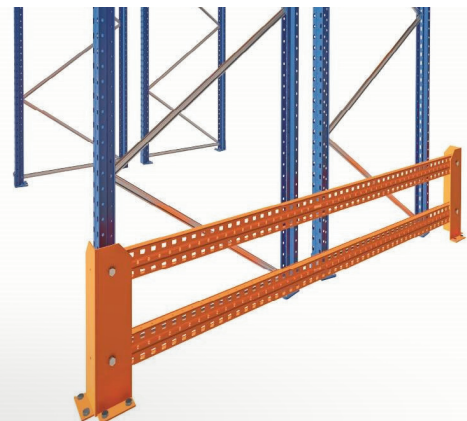
Frame Foot Protection (Corner)



Foot Protection (Plastic)



Foot Protection Barrier

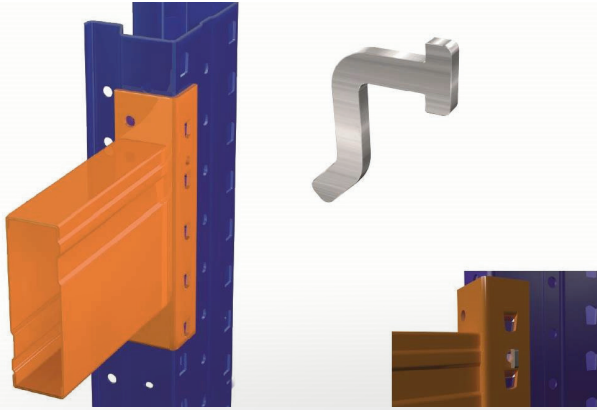


# PRODUCT CATALOG

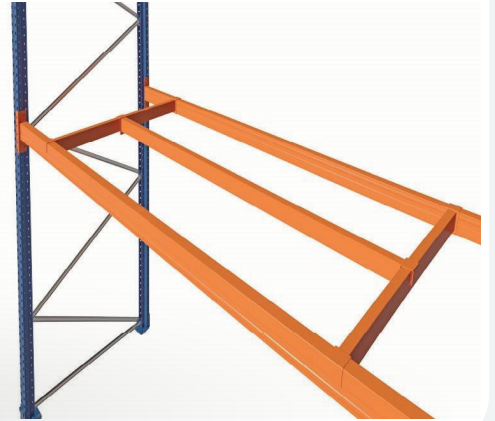
IF YOU DESIRE FURTHER INFORMATION REGARDING OUR PRODUCTS, PLEASE GET IN TOUCH WITH US.

## Accessories for Shelving Systems

### Safety Latch



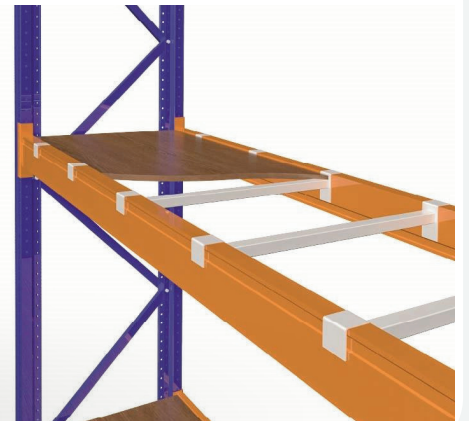
### H Security Profile For Pallets



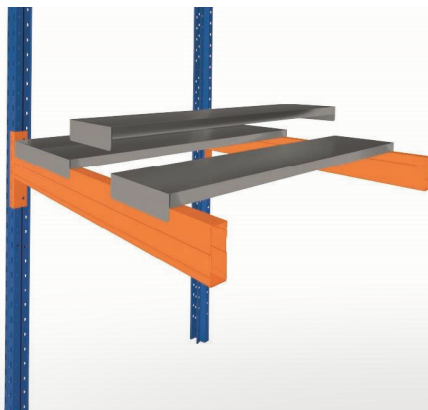
### Security Profile For Pallets



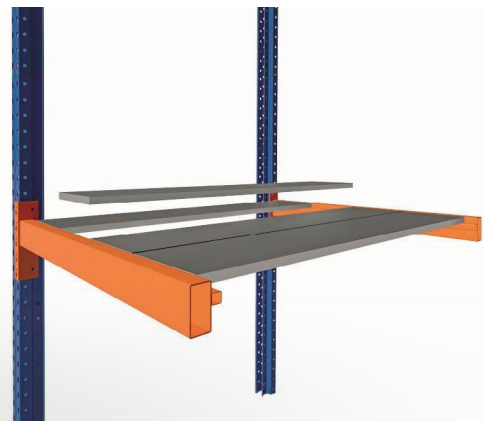
### Security Profile For Chipboard Shelf



### Fringed Shelf Table



### Without Fringe Shelf Table



# PRODUCT CATALOG

IF YOU DESIRE FURTHER INFORMATION REGARDING OUR PRODUCTS, PLEASE GET IN TOUCH WITH US.

## Types of Cabinets

### Filing Cabinets

Our File Cabinet models are suitable for Offices, Archive Rooms, Warehouses, and various other settings, providing a secure storage solution for your essential documents and personal items due to their robust and long-lasting design. Within the File Cabinets category, custom production is available alongside our standard offerings to meet specific requirements and requests.

### Lockers

Our Metal Staff Locker models are versatile and suitable for various settings like Student Dormitories, Sports Halls, and Military Dormitories, providing a secure storage solution for personal belongings. Enhancing the regularity and reliability of locker room usage, these lockers offer both standard and customized production options within the Staff Lockers category.

### File Cabinet with Sliding Doors



### File Cabinet with Lid



### 6-Piece Locker



### Z Type Locker Cabinet



# PRODUCT CATALOG

IF YOU DESIRE FURTHER INFORMATION REGARDING OUR PRODUCTS, PLEASE GET IN TOUCH WITH US.

## Market Shelving Systems

Metal wall units, wooden wall units, greengrocer units, bakery units, counters, cabinets, auxiliary accessories, cash registers, and turnstiles comprise market shelf systems. These systems are specifically crafted to showcase products in markets effectively, enabling customers to navigate through items effortlessly. Poorly designed shelf systems in markets can have a detrimental impact on business profits. If customers struggle to locate desired products or have an unpleasant shopping experience, they are unlikely to return. Consideration of the market area's layout is crucial when implementing shelf systems. By selecting the appropriate shelf system, businesses can encourage repeat visits from customers. Enhancing the shopping experience can lead to increased earnings. Regardless of business size, optimal stocking and display efficiency can be achieved through well-thought-out designs. Our team offers professional insights on shelf system placement during the design process. Markets are diversifying their product offerings beyond food items to boost revenue and expand their customer base. Flexibility is key in market shelf system design to accommodate changing product displays. We provide complimentary surveys for market shelf systems and assist with system design. Contact us for information on tailored shelf systems for your business needs.





**COMMUNICATION:**

Phone: +90 262 653 01 01

Phone: +90 531 962 74 59

Website: [www.ertasraf.com](http://www.ertasraf.com)

Email: [info@ertasraf.com](mailto:info@ertasraf.com)

Email: [mucahit@ertasraf.com](mailto:mucahit@ertasraf.com)